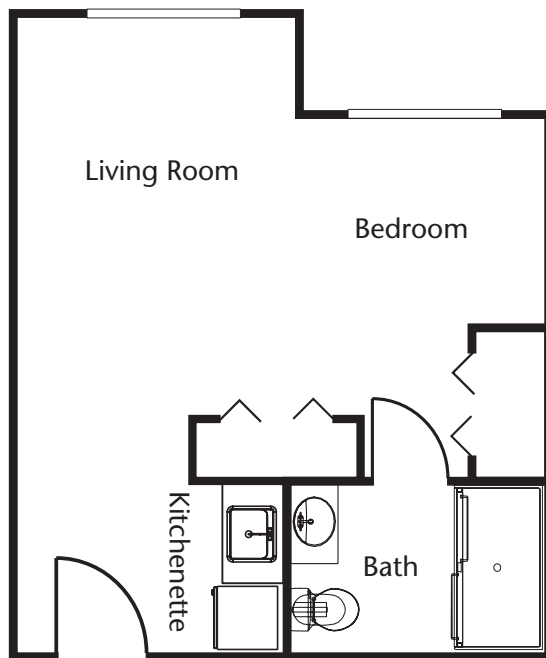


Floor Plans

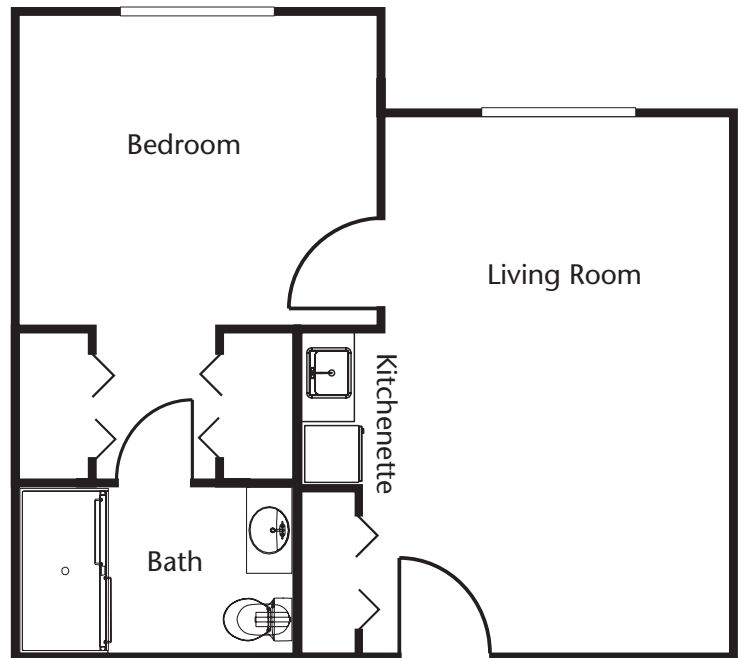
Studio

427 sq. ft.



One Bedroom

587 sq. ft.



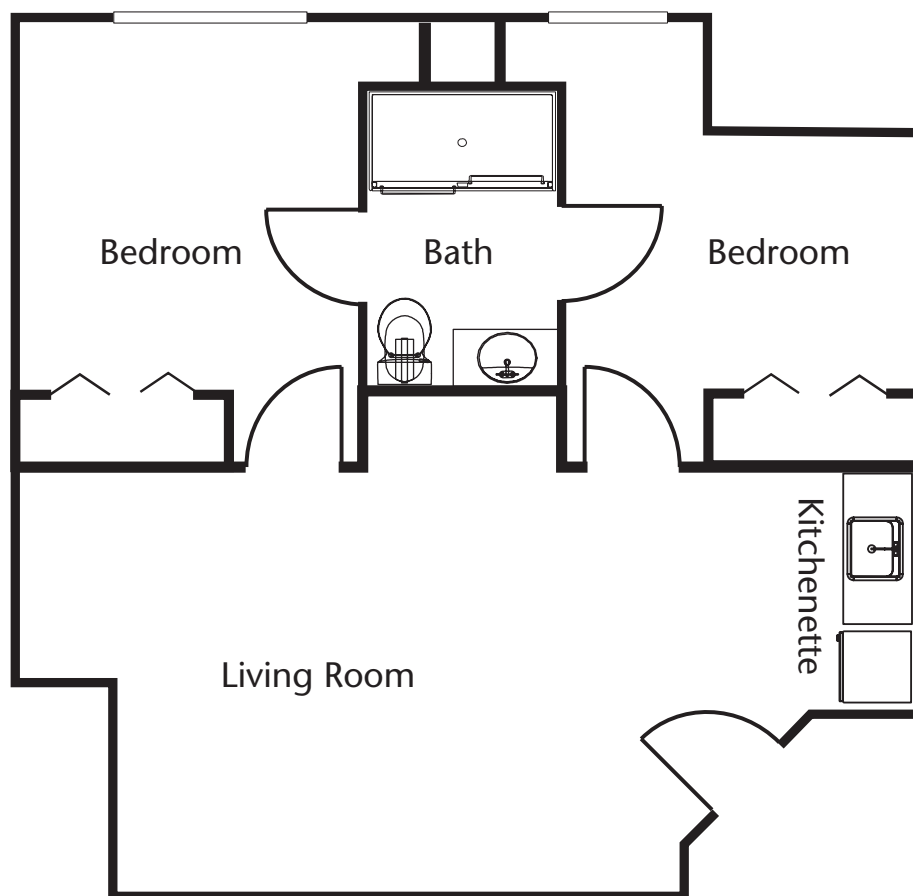
Brookdale Fisher's Landing

17171 Southeast 22nd Drive
Vancouver, Washington 98683
(360) 885-1400

Dimensions are approximate. Floor plans may vary.

Floor Plans

Two Bedroom
900 sq. ft.



Brookdale Fisher's Landing

17171 Southeast 22nd Drive
Vancouver, Washington 98683
(360) 885-1400

Dimensions are approximate. Floor plans may vary.